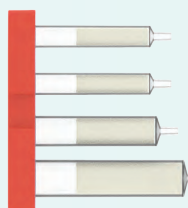


Reaction Classes and Reagents

Heterocycles



SnAP Reagent
(immobilized), 4 Å MS

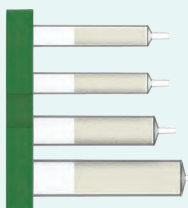
Cu-Catalyst
(Cu(OTf)₂ and 2,6-lutidinium triflate)

Silica

SCX

• up to 0.5 mmol

Reductive Amination



Solid supported cyano borohydride

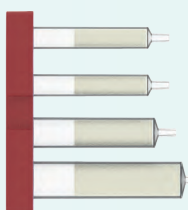
Phenylacetic acid

SCX

Polymer supported benzaldehyde

• up to 1.5 mmol

Amide Formation



-

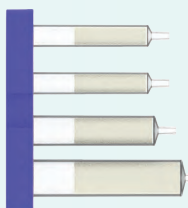
SCX (buffered)

Oxyma Pure
silica-supported carbodiimide

silica-supported carbonate

• up to 0.5 mmol

Mitsunobu



Triphenylphosphine
(polymer supported)

Di-tert-butyl Azodicarboxylate (DTBAD)

SCX

Solid supported carbonate

• up to 0.5 mmol

Reagent Cartridge

Article No.

Morpholine	H001
Oxazepane	H002
2-Methylmorpholine	H004
Piperazine	H005
Diazepane	H006
3-Methylmorpholine	H007
Morpholine-2-spiro-(3-Pyr)	H010
Morpholine-2-spiro-(4-Pip)	H011
9-OMe-Benzoxazepane	H090
7-Br-9-OMe-Benzoxazepane	H091

Reagent Cartridge

Article No.

Reductive Amination	R001
---------------------	------

Reagent Cartridge

Article No.

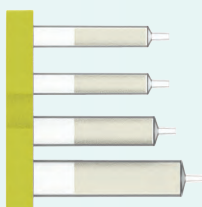
Amide Formation	A011
-----------------	------

Reagent Cartridge

Article No.

Mitsunobu	M001
-----------	------

PROTAC formation (via Reductive Amination)



- silica-supported cyanoborohydride
- silica-supported triethylamine
- SCX
- protein degrader building block

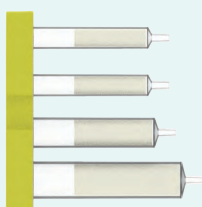
• up to 0.2 mmol

Reagent Cartridge

Article No.

CRBN-PEG1		P001
CRBN-PEG1 (0.2mmol)		P001L
CRBN-PEG2		P002
CRBN-PEG2 (0.2 mmol)		P002L
CRBN-PEG3		P003
CRBN-PEG3 (0.2 mmol)		P003L
CRBN-PEG4		P004
CRBN-PEG4 (0.2 mmol)		P004L
CRBN-PEG5		P005
CRBN-PEG5 (0.2 mmol)		P005L
VHL-PEG1		P021
VHL-PEG2		P022
VHL-PEG3		P023
VHL-PEG4		P024
VHL-PEG5		P025

PROTAC formation (via Amide Formation)



- Oxyma Pure silica-supported carbodiimide
- SCX (buffered)
- silica-supported carbonate
- protein degrader building block

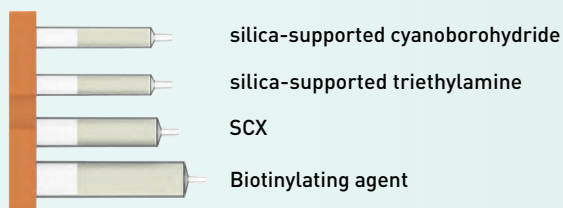
• up to 0.2 mmol

Reagent Cartridge

Article No.

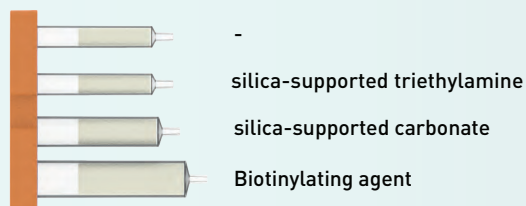
CRBN-COOH-PEG2		P072
CRBN-COOH-PEG3		P073
CRBN-COOH-PEG4		P074
VHL-COOH-PEG2		P082
VHL-COOH-PEG3		P083
VHL-COOH-PEG4		P084

Biotin Tag Formation (via Reductive Amination)



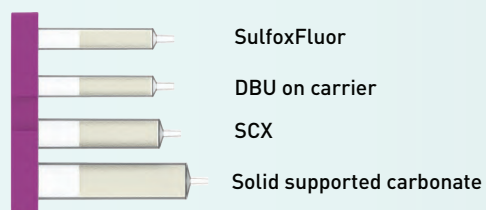
• up to 0.1 mmol

Biotin Tag Formation (via Amide Formation)



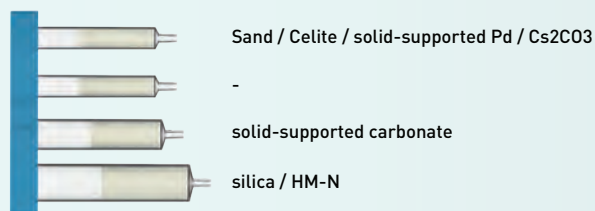
• up to 0.1 mmol

Deoxyfluorination



• up to 0.2 mmol

Suzuki coupling

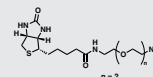


• up to 0.8 mmol

Reagent Cartridge

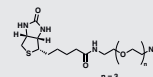
Article No.

BTA-PEG2-NH2



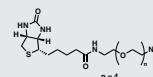
BT002

BTA-PEG3-NH2



BT003

BTA-PEG4-NH2

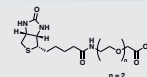


BT004

Reagent Cartridge

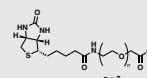
Article No.

BTA-PEG2-a-COOTfp



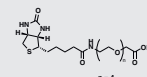
BT022

BTA-PEG3-a-COOTfp



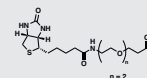
BT023

BTA-PEG4-a-COOTfp



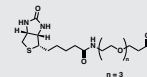
BT024

BTA-PEG2-COOTfp



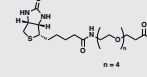
BT032

BTA-PEG3-COOTfp



BT033

BTA-PEG4-COOTfp



BT034

Reagent Cartridge

Article No.

Deoxyfluorination

F001

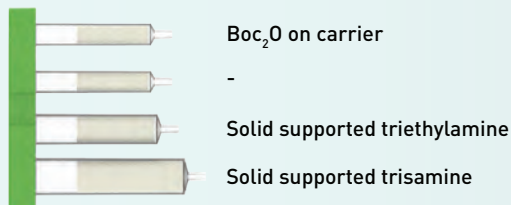
Reagent Cartridge

Article No.

Suzuki DPP-Pd

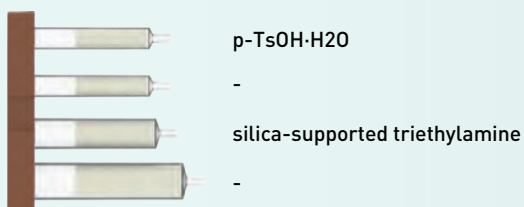
C001

Boc protection



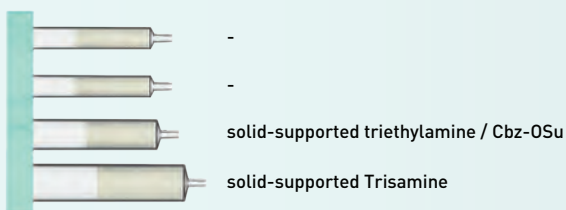
- up to 1.2 mmol

Boc deprotection



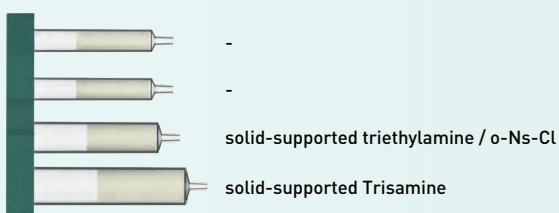
- up to 0.5 mmol

Cbz protection



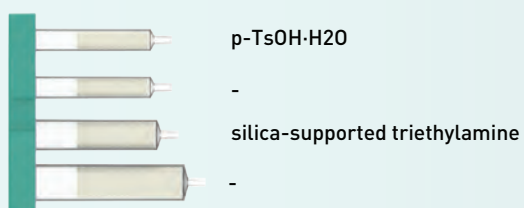
- up to 0.8 mmol

Nosyl protection



- up to 0.8 mmol

Silyl deprotection



- up to 0.5 mmol

Reagent Cartridge

Article No.

Boc protection 0.5 mmol	B001
Boc protection 1.2 mmol	B002

Reagent Cartridge

Article No.

Boc deprotection 0.5 mmol	B011
---------------------------	------

Reagent Cartridge

Article No.

Cbz protection	B031
----------------	------

Reagent Cartridge

Article No.

Nosyl protection	B032
------------------	------

Reagent Cartridge

Article No.

Silyl deprotection	B021
--------------------	------

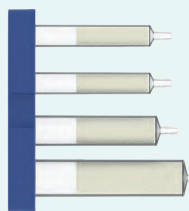
Azide Formation (alkyl amines)

Reagent Cartridge

Article No.

Azide Formation (alkyl amines)

A001



-
silica-supported triethylamine

1H-imidazole-1-sulfonyl azide hydrogen tetrafluoroborate, silica-supported triethylamine,
KHC03, CuSO4·5H2O

SCX

• up to 0.5 mmol

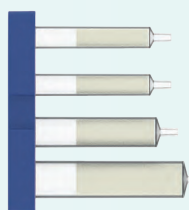
Azide Formation (aryl amines)

Reagent Cartridge

Article No.

Azide Formation (aryl amines)

A002



HM-N

silica-supported triethylamine / HM-N

1H-imidazole-1-sulfonyl azide hydrogen tetrafluoroborate, silica-supported triethylamine,
KHC03

SCX / HM-N

• up to 0.5 mmol

For more information please visit:



Order Form



Reaction Classes



Application Notes

SYNPLE

Enabling faster & more efficient discovery cycles

www.synplechem.com info@synplechem.com

